

# We're Going to Measure Island





We're going to see Measure Island, at the Sciencentre



The Sciencentre is in the city.

Sometimes the city is noisy,  
but I'll be fine, we'll be inside  
the Sciencentre soon.



The Sciencentre is inside the Queensland Museum, when we arrive we will see a big aeroplane and then a model of a big dinosaur!



When we walk into the Sciencentre, we will show our ticket and then go inside.

It looks a little dark, but there are plenty of lights!



As I walk in I'm going to remember that there will be lots of people and I'll need to take turns at using all of the fun things to do.

1

2

3

4

5

6

7

8

9

10

If I've been using a display and it's someone else's turn, a grown up may say to me "You have 10 more seconds".



When the grown up reaches the number 10, I will share the exhibit and remember that it doesn't matter, there are plenty more fun things to see!

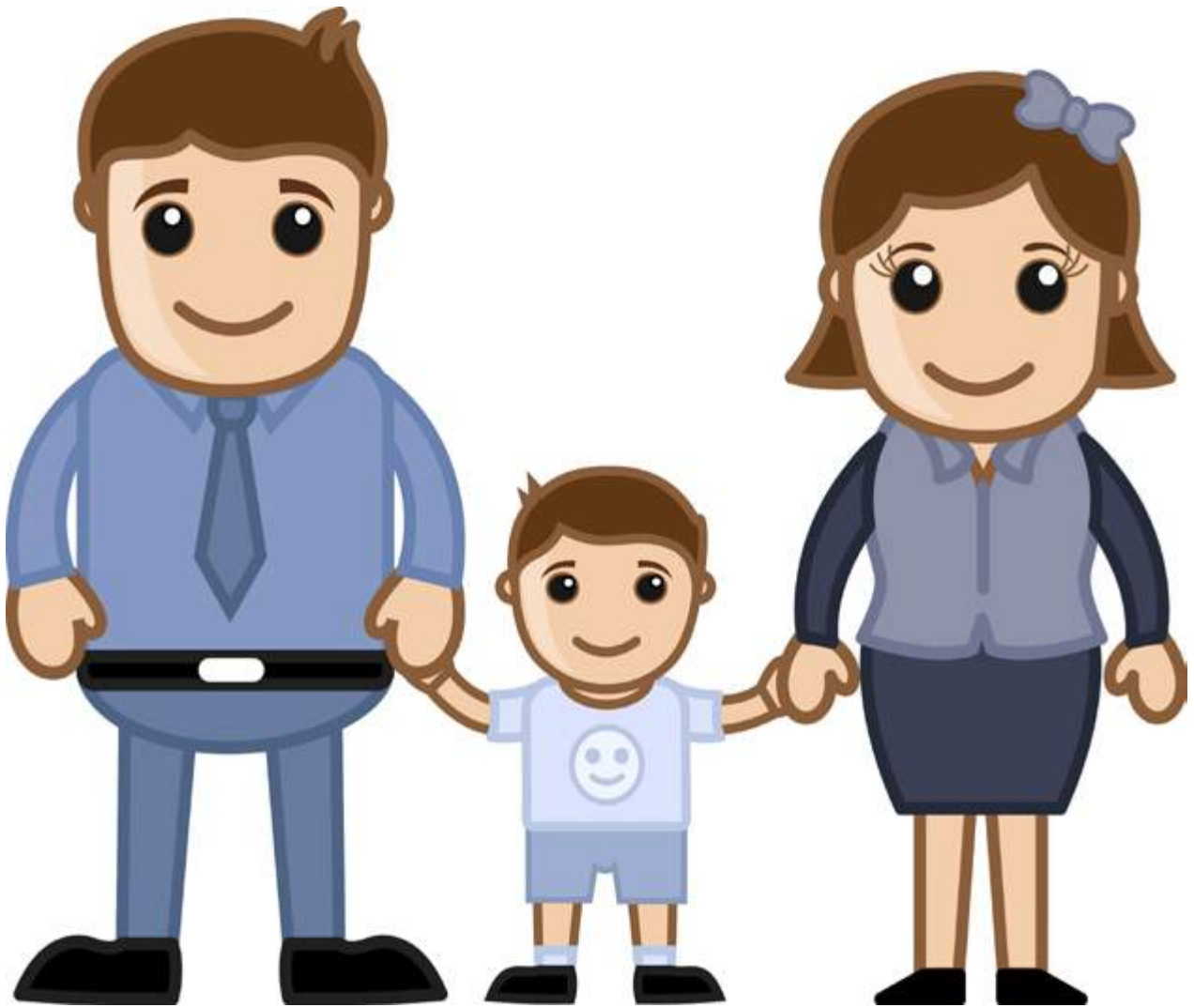




The Sciencentre has a Chill Out Room, this is where I can go to sit down and relax, have some food and a drink.



If I start to feel worried or uncomfortable, or there is too much noise, I will say to a grown up “I need to go to the Chill Out room please”.



Measure Island will be so much fun, I don't need to worry because I can leave if I'm not happy and there will be lots of people there to help out.



We will see lots of fun things....



There are so many fun things to do at Measure Island.



I will have a fun time, I will tell my grown up if I need time by myself, I will share with others and others will share with me.